

RIPK2, Active

Recombinant human protein expressed in Sf9 cells

Catalog # R08-11G-10

Lot # Q053-1

Product Description

Recombinant human RIPK2 (1-299) was expressed by baculovirus in Sf9 insect cells using an N-terminal GST tag. The gene accession number is [NM_003821](#).

Gene Aliases

RICK; RIP2; CARD3; CARDIAK

Concentration

0.1 µg/µl

Formulation

Recombinant protein stored in 50mM Tris-HCl, pH 7.5, 150mM NaCl, 0.25mM DTT, 0.1mM EGTA, 0.1mM EDTA, 0.1mM PMSF, 25% glycerol.

Storage, Shipping and Stability

Store product at -70°C . For optimal storage, aliquot target into smaller quantities after centrifugation and store at recommended temperature. For most favorable performance, avoid repeated handling and multiple freeze/thaw cycles. Stability is 6 months at -70°C from date of shipment. Product shipped on dry ice.

Scientific Background

RIPK2 (RIP2; RICK) is a death domain-containing protein kinase encoding a predicted 540-amino acid protein which contains an N-terminal serine/threonine kinase catalytic domain and a C-terminal caspase activation and recruitment domain. RIPK2 is thought to regulate apoptosis induced by the FAS receptor pathway (1). RIPK2 has been shown to specifically interact with the CARD of ICE/caspase-1 and this interaction correlates with the processing of pro-caspase-1 and the formation of the active caspase-1 p20 (2).

References

1. Inohara, N. et al: RICK, a novel protein kinase containing a caspase recruitment domain, interacts with CLARP and regulates CD95-mediated apoptosis. *J. Biol. Chem.* 273: 12296-12300, 1998. Note: Erratum: *J. Biol. Chem* 273: 18675 only, 1998.
2. Thome, M. et al: Identification of CARDIAK, a RIP-like kinase that associates with caspase-1. *Curr. Biol.* 8: 885-888, 1998.

Purity

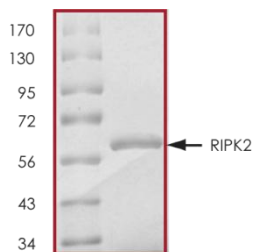
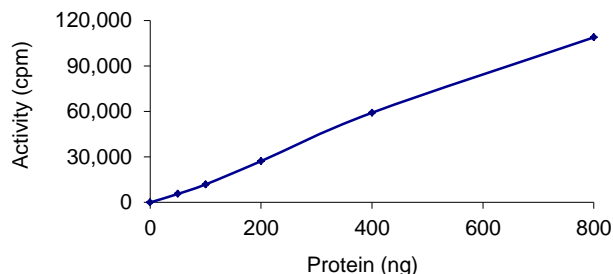


Figure 1. SDS-PAGE gel image

The purity of RIPK2 was determined to be **>95%** by densitometry, approx. MW **59kDa**.

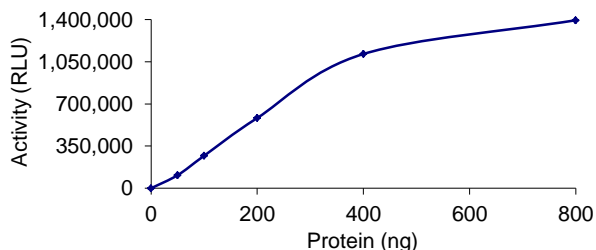
Specific Activity

Figure 2. Radiometric Assay Data



The specific activity of RIPK2 was determined to be **19 nmol /min/mg** as per activity assay protocol. (For Radiometric Assay Protocol on this product please see pg. 2)

Figure 3. ADP-Glo™ Assay Data



The specific activity of RIPK2 was determined to be **45 nmol /min/mg** as per activity assay protocol. (For ADP-Glo™ Assay Protocol on this product please see pg. 3)

Activity Assay Protocol

Reaction Components

Active Kinase (Catalog #: R08-11G)

Active RIPK2 (0.1 µg/µl) diluted with Kinase Dilution Buffer III (Catalog #: K23-09) and assayed as outlined in sample activity plot. (Note: these are suggested working dilutions and it is recommended that the researcher perform a serial dilution of Active RIPK2 for optimal results).

Kinase Dilution Buffer III (Catalog #: K23-09)

Kinase Assay Buffer I (Catalog #: K01-09) diluted at a 1:4 ratio (5X dilution) with final 50ng/µl BSA solution.

Kinase Assay Buffer I (Catalog #: K01-09)

Buffer components: 25mM MOPS, pH 7. 2, 12.5mM β-glycerol-phosphate, 25mM MgCl₂, 5mM EGTA, 2mM EDTA. Add 0.25mM DTT to Kinase Assay Buffer prior to use.

[³³P]-ATP Assay Cocktail

Prepare 250µM [³³P]-ATP Assay Cocktail in a designated radioactive working area by adding the following components: 150µl of 10mM ATP Stock Solution (Catalog #: A50-09), 100µl [³³P]-ATP (1mCi/100µl), 5.75ml of Kinase Assay Buffer I (Catalog #: K01-09). Store 1ml aliquots at -20°C.

10mM ATP Stock Solution (Catalog #: A50-09)

Prepare ATP stock solution by dissolving 55mg of ATP in 10ml of Kinase Assay Buffer I (Catalog #: K01-09). Store 200µl aliquots at -20°C.

Substrate (Catalog #: M42-51N)

Myelin basic protein (MBP) diluted in distilled H₂O to a final concentration of 1mg/ml.

Assay Protocol

- Step 1.** Thaw [³³P]-ATP Assay Cocktail in shielded container in a designated radioactive working area.
- Step 2.** Thaw the Active RIPK2, Kinase Assay Buffer, Substrate and Kinase Dilution Buffer on ice.
- Step 3.** In a pre-cooled microfuge tube, add the following reaction components bringing the initial reaction volume up to 20µl:
 - Component 1.** 10µl of diluted Active RIPK2 (Catalog #R08-11G)
 - Component 2.** 5µl of 1mg/ml stock solution of substrate (Catalog #M42-51N)
 - Component 3.** 5µl distilled H₂O (4°C)
- Step 4.** Set up the blank control as outlined in step 3, excluding the addition of the substrate. Replace the substrate with an equal volume of distilled H₂O.
- Step 5.** Initiate the reaction by the addition of 5µl [³³P]-ATP Assay Cocktail bringing the final volume up to 25µl and incubate the mixture in a water bath at 30°C for 15 minutes.
- Step 6.** After the 15 minute incubation period, terminate the reaction by spotting 20µl of the reaction mixture onto individual pre-cut strips of phosphocellulose P81 paper.
- Step 7.** Air dry the pre-cut P81 strip and sequentially wash in a 1% phosphoric acid solution (dilute 10ml of phosphoric acid and make a 1L solution with distilled H₂O) with constant gentle stirring. It is recommended that the strips be washed a total of 3 intervals for approximately 10 minutes each.
- Step 8.** Count the radioactivity (cpm) on the P81 paper in the presence of scintillation fluid in a scintillation counter.
- Step 9.** Determine the corrected cpm by removing the blank control value (see Step 4) for each sample and calculate the kinase specific activity as outlined below.

Calculation of [³³P]-ATP Specific Activity (SA) (cpm/pmol)

Specific activity (SA) = cpm for 5 µl [³³P]-ATP / pmoles of ATP (in 5 µl of a 250 µM ATP stock solution, i.e., 1250 pmoles)

Kinase Specific Activity (SA) (pmol/min/µg or nmol/min/mg)

Corrected cpm from reaction / [(SA of ³³P-ATP in cpm/pmol)*(Reaction time in min)*(Enzyme amount in µg or mg)]*[(Reaction Volume) / (Spot Volume)]

ADP-Glo™ Activity Assay Protocol

Reaction Components

RIPK2 Kinase Enzyme System (Promega, Catalog #:V4084)

RIPK2, Active, 10µg (0.1 µg/µl)
MBP Protein, 1ml (1mg/ml)
Reaction Buffer A (5X), 1.5ml
DTT (0.1M), 25µl

ADP-Glo™ Kinase Assay Kit (Promega, Catalog #: V9101)

Ultra Pure ATP, 10 mM (0.5ml)
ADP, 10 mM (0.5ml)
ADP-Glo™ Reagent (5ml)
Kinase Detection Buffer (10ml)
Kinase Detection Substrate (Lyophilized)

Reaction Buffer A (5X)

200mM Tris-HCl, pH 7.5, 100mM MgCl₂ and 0.5 mg/ml BSA.

Assay Protocol

The RIPK2 assay is performed using the RIPK2 Kinase Enzyme System (Promega; Catalog #: V4084) and ADP-Glo™ Kinase Assay kit (Promega; Catalog #: V9101). The RIPK2 reaction utilizes ATP and generates ADP. Then the ADP-Glo™ Reagent is added to simultaneously terminate the kinase reaction and deplete the remaining ATP. Finally, the Kinase Detection Reagent is added to convert ADP to ATP and the newly synthesized ATP is converted to light using the luciferase/luciferin reaction. For more detailed protocol regarding the ADP-Glo™ Kinase Assay, see the technical Manual #TM313, available at www.promega.com/tbs/tm313/tm313.html.

- Step 1.** Thaw the ADP-Glo™ Reagents at ambient temperature. Then prepare Kinase Detection Reagent by mixing Kinase Detection Buffer with the Lyophilized Kinase Detection Substrate. Set aside.
- Step 2.** Thaw the components of RIPK2 Enzyme System, ADP and ATP on ice.
- Step 3.** Prepare 1ml of 2X Buffer by combining 400µl Reaction Buffer A, 1µl DTT and 599µl of dH₂O.
- Step 4.** Prepare 1ml of 250µM ATP Assay Solution by adding 25µl ATP solution (10mM) to 500µl of 2X Buffer and 475µl of dH₂O.
- Step 5.** Prepare diluted RIPK2 in 1X Buffer (diluted from 2X buffer) as outlined in sample activity plot. (Note: these are suggested working dilutions and it is recommended that the researcher perform a serial dilution of Active RIPK2 for optimal results).
- Step 6.** In a white 96-well plate (Corning Cat # 3912), add the following reaction components bringing the initial reaction volume up to 20µl:

Component 1.	10µl of diluted Active RIPK2
Component 2.	5µl of 1mg/ml stock solution of substrate
Component 3.	5µl of 2X Buffer
- Step 7.** Set up the blank control as outlined in step 6, excluding the addition of the substrate. Replace the substrate with an equal volume of distilled H₂O.
- Step 8.** At the same time as the RIPK2 kinase reaction, set up an ATP to ADP conversion curve at 50µM ATP/ADP range as described in the ADP-Glo™ Kinase Assay technical Manual #TM313.
- Step 9.** Initiate the RIPK2 reactions by the addition of 5µl of 250 µM ATP Assay Solution thereby bringing the final volume up to 25µl. Shake the plate and incubate the reaction mixture at 30°C for 15 minutes.
- Step 10.** Terminate the reaction and deplete the remaining ATP by adding 25µl of ADP-Glo™ Reagent. Shake the 96-well plate and then incubate the reaction mixture for another 40 minute at ambient temperature.
- Step 11.** Add 50µl of the Kinase Detection Reagent, shake the plate and then incubate the reaction mixture for another 30 minute at ambient temperature.
- Step 12.** Read the 96-well reaction plate using the Kinase-Glo™ Luminescence Protocol on a GloMax® Microplate Luminometer (Promega; Cat # E6501).
- Step 13.** Using the conversion curve, determine the amount of ADP produced (nmol) in the presence (step 6) and absence of substrate (Step 7) and calculate the kinase specific activity as outlined below. For a detailed protocol of how to determine nmols from RLU, see Kinase Enzyme Systems Protocol at: <http://www.promega.com/KESProtocol>

Kinase Specific Activity (SA) (nmol/min/mg)

(ADP (step 6) – ADP (Step 7)) in nmol / (Reaction time in min)*(Enzyme amount in mg)