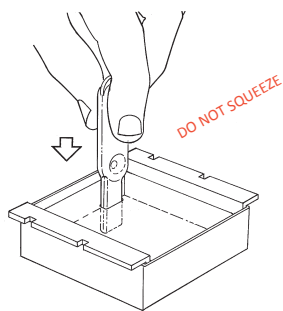
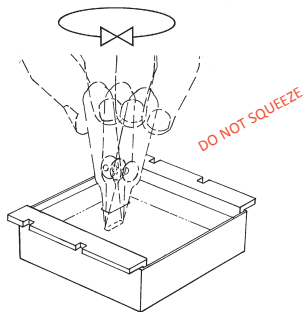


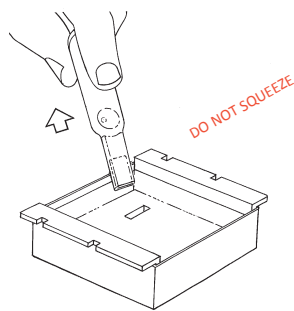
The x-tracta™ Gel Extractor tool provides a fast, convenient, precise and safe way to extract and dispense samples



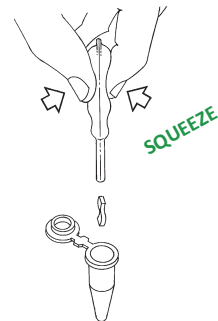
**1** INSERT into gel



**2** ROCK SLIGHTLY to cut through gel



**3** REMOVE at a slant



**4** SQUEEZE to dispense

**ATTENTION.** Do not squeeze the bulb until dispensing at step 4. **TO DISPENSE.** Best to use a quick snap-action squeeze.

**ATTENTION.** In accordance with good laboratory practice, use the x-tracta™ Gel Extractor tool once then discard it to prevent cross contamination.

**USAGE NOTE.** The x-tracta™ Gel Extractor works best on 0.6%-2.0% analytical grade agarose gels. Please exercise caution if using the x-tracta™ Gel Extractor on Low Melting Point (LMP) agarose gels as the extractor does not work effectively due to the consistency of the gel.

## Ordering Information

PRODUCT	SIZE	CAT.#
x-tracta™ Gel Extractor	25 pack	A2121
	100 pack	A2122

## Related Products

PRODUCT	SIZE	CAT.#
Wizard® SV Gel and PCR Clean-Up System	50 preps	A9281
	250 preps	A9292
	1000 preps	A9285

Promega warrants that the x-tracta™ Gel Extractor tool is free from defects in material and workmanship at the time of shipment. Promega shall not be liable for any loss of use or profits or facilities or any other indirect, incidental or consequential damages arising out of the use or performance of the product involved.

Wizard is a registered trademark of Promega Corporation. x-tracta is a trademark of LabGadget LLC.

Patent Pending.



PROMEGA CORPORATION • 2800 WOODS HOLLOW ROAD  
MADISON, WI 53711-5399 USA • TELEPHONE 608-274-4330

[www.promega.com](http://www.promega.com) • ©2011 PROMEGA CORPORATION • ALL RIGHTS RESERVED • PRICES AND SPECIFICATIONS SUBJECT TO CHANGE WITHOUT PRIOR NOTICE • PRINTED IN USA 7/11 • 20809 • PART #GE449



AF9GE449 0711GE449