



TECHNICAL MANUAL

PowerPlex® 5C Matrix Standard

Instructions for Use of Product
DG4850

PowerPlex® 5C Matrix Standard

All technical literature is available at: www.promega.com/protocols/
 Visit the web site to verify that you are using the most current version of this Technical Manual.
 E-mail Promega Technical Services if you have questions on use of this system: genetic@promega.com

1.	Description	1
2.	Product Components and Storage Conditions	2
3.	Instrument Preparation and Spectral Calibration Using the Applied Biosystems® 3500 and 3500xL Genetic Analyzers.....	2
	3.A. Matrix Sample Preparation	2
	3.B. Instrument Preparation	3
4.	Instrument Preparation and Spectral Calibration Using the Applied Biosystems® 3130 and 3130x/ Genetic Analyzers with Data Collection Software Version 2.0 and Higher	5
	4.A. Matrix Sample Preparation	5
	4.B. Instrument Preparation	6
5.	Instrument Preparation and Spectral Calibration Using POP-7® Polymer, Data Collection Software Version 3.0 and Higher and the Applied Biosystems® 3130 or 3130x/ Genetic Analyzer	9
	5.A. Matrix Sample Preparation	9
	5.B. Instrument Preparation	10
6.	Troubleshooting	12
	6.A. Applied Biosystems® 3500 and 3500xL Genetic Analyzers	12
	6.B. Applied Biosystems® 3130 and 3130x/ Genetic Analyzers	13
7.	Related Products	14
8.	Summary of Changes	14

1. Description

Proper generation of a spectral calibration file is critical to evaluate multicolor STR data on multicapillary electrophoresis instruments. The PowerPlex® 5C Matrix Standard^(a) consists of DNA fragments labeled with five different fluorescent dyes (fluorescein, JOE, TMR-ET, CXR-ET and WEN) in one tube. The spectral calibration is performed using the G5 dye set. Once generated, the spectral calibration file is applied during sample detection to calculate the spectral overlap and separate the raw fluorescent signals into individual dye signals. The PowerPlex® 5C Matrix Standard can be used with any of the 5-dye Promega STR amplification systems.

A spectral calibration must be generated for each individual instrument. A new matrix should be run after major maintenance on the system, such as changing the laser, calibrating or replacing the CCD camera or changing the polymer type or capillary array. We also recommend that you generate a new matrix after the instrument is moved to a new location. In some instances, a software upgrade may necessitate generation of a new matrix. Individual laboratories should determine the frequency of matrix generation.

..... Protocols to operate the fluorescence-detection instruments should be obtained from the manufacturer.

2. Product Components and Storage Conditions

PRODUCT	SIZE	CAT.#
PowerPlex® 5C Matrix Standard	5 preps	DG4850

Not For Medical Diagnostic Use. Includes:

- 150µl 5C Matrix Mix
- 5 x 200µl Matrix Dilution Buffer

Storage Conditions: Upon receipt, store all components at -30°C to -10°C in a nonfrost-free freezer, protected from light. Do not store reagents in the freezer door, where the temperature can fluctuate. After the first use, store the PowerPlex® 5C Matrix Standard components at $+2^{\circ}\text{C}$ to $+10^{\circ}\text{C}$, protected from light. We strongly recommend that you store the PowerPlex® 5C Matrix Standard with the post-amplification reagents. The PowerPlex® 5C Matrix Standard is light-sensitive; dilute the 5C Matrix Mix in Matrix Dilution Buffer in the provided amber tube. Store the diluted 5C Matrix Mix at $+2^{\circ}\text{C}$ to $+10^{\circ}\text{C}$ for up to 1 week.



Do not refreeze the PowerPlex® 5C Matrix Standards components.

3. Instrument Preparation and Spectral Calibration Using the Applied Biosystems® 3500 and 3500xL Genetic Analyzers

Materials to Be Supplied by the User

- centrifuge compatible with 96-well plates
- aerosol-resistant pipette tips
- 3500/3500xL capillary array, 36cm
- performance optimized polymer 4 (POP-4®) for the 3500 or 3500xL
- anode buffer container with 1X running buffer
- cathode buffer container with 1X running buffer
- MicroAmp® optical 96-well plate and septa
- Hi-Di™ formamide (Applied Biosystems Cat.# 4311320)

For additional information on performing spectral calibration, refer to the *Applied Biosystems® 3500/3500xL Genetic Analyzer User Guide*.



The quality of formamide is critical. Use Hi-Di™ formamide. Freeze formamide in aliquots at -20°C . Multiple freeze-thaw cycles or long-term storage at 4°C can cause breakdown of formamide. Poor-quality formamide can contain ions that compete with DNA during injection, which results in lower peak heights and reduced sensitivity. A longer injection time may not increase the signal.



Formamide is an irritant and a teratogen; avoid inhalation and contact with skin. Read the warning label, and take appropriate precautions when handling this substance. Always wear gloves and safety glasses when working with formamide.

3.A. Matrix Sample Preparation

1. At the first use, thaw the 5C Matrix Mix and Matrix Dilution Buffer completely. After the first use, store the reagents at $+2^{\circ}\text{C}$ to $+10^{\circ}\text{C}$, protected from light.

2. Vortex the 5C Matrix Mix for 10–15 seconds prior to use. Add 10µl of 5C Matrix Mix to one tube of Matrix Dilution Buffer. Vortex for 10–15 seconds. Note the date of dilution on the tube.
Note: The diluted 5C Matrix Mix can be stored for up to 1 week at +2°C to +10°C.
3. Add 10µl of the diluted 5C Matrix Mix prepared in Step 2 to 500µl of Hi-Di™ formamide. Vortex for 10–15 seconds.
4. For the Applied Biosystems® 3500xL Genetic Analyzer, 24 wells are used for spectral calibration on 24 capillaries (wells A1 through H3 of a 96-well plate). Add 15µl of 5C Matrix Mix with formamide prepared in Step 3 to each of the 24 wells. After placing the septa on the plate, briefly centrifuge the plate to remove any air bubbles.



Do not heat denature.

For the Applied Biosystems® 3500 Genetic Analyzer, 8 wells are used for spectral calibration on 8 capillaries (wells A1 through H1 of a 96-well plate). Add 15µl of 5C Matrix Mix with formamide prepared in Step 3 to each of the eight wells. After placing the septa on the plate, briefly centrifuge the plate to remove any air bubbles.



Do not heat denature.

5. Place the plate in the 3500 series 96-well standard plate base, and cover with the plate retainer. Do not start the spectral calibration run until the oven is preheated to 60°C.

3.B. Instrument Preparation

We have found that the use of fresh polymer and a new capillary array results in an optimal spectral calibration.

Representative data are shown in Figure 1.

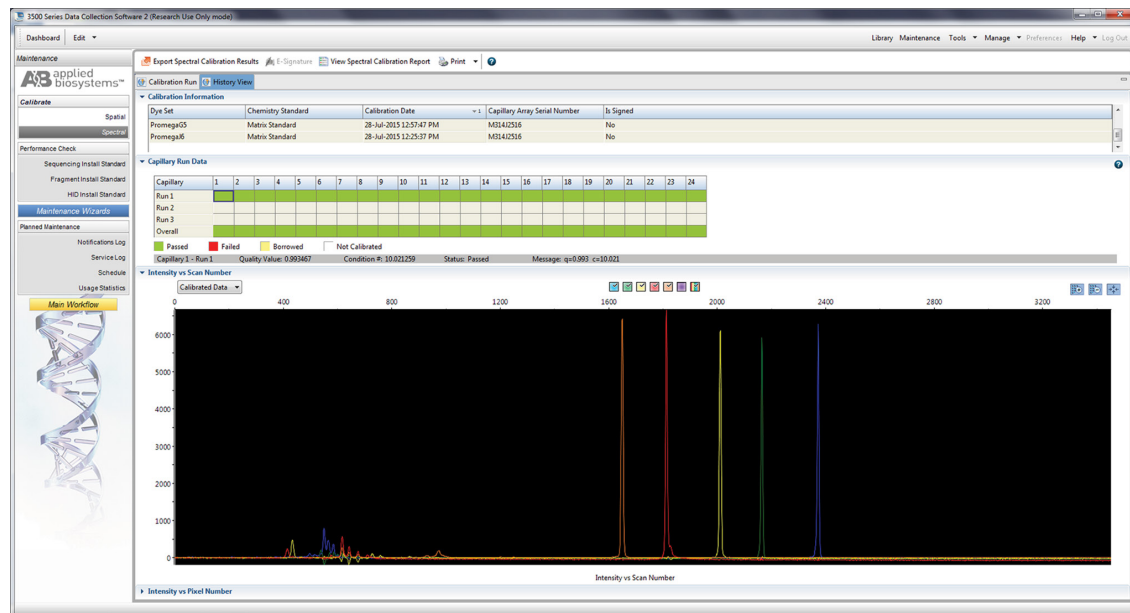


Figure 1. Representative data for the PowerPlex® 5C Matrix Standard on the Applied Biosystems® 3500xL Genetic Analyzer using POP-4® polymer and Data Collection Software Version 2.0.

3.B. Instrument Preparation (continued)

1. Set the oven temperature to 60°C, and then select the **Start Pre-Heat** icon at least 30 minutes prior to the first injection to preheat the oven.
2. To perform a spectral calibration for the Promega 5-dye STR amplification systems, a new dye set should be created. If a new dye set was created previously, proceed to Step 2.c.
 - a. To create the new dye set, navigate to the Library, highlight “Dye Sets” and select **Create**.
 - b. The ‘Create New Dye Set’ window will appear (Figure 2). Name the Dye Set (e.g., Promega G5), select **Matrix Standard** for the Chemistry and select **G5 Template** for the Dye Set Template. Under Parameters, change the After Scan number to 800 from the default number of 500. Select **Save**.

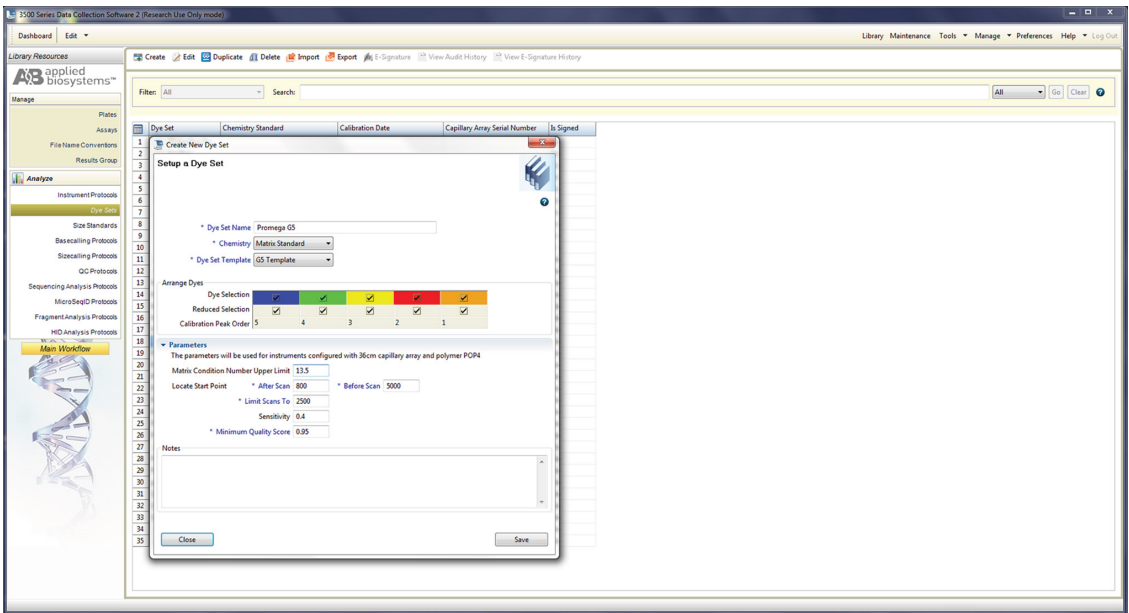


Figure 2. The Create New Dye Set window.

- c. To perform the spectral calibration, go to the ‘Maintenance’ tab, select **Spectral** and, under the ‘Calibration Run’ tab, choose the appropriate fields: Choose **Matrix Standard** from the Chemistry Standard drop-down menu and the new Promega 5C dye set (e.g., Promega G5) created in Step 2.b from the Dye Set drop-down menu.
- d. Select **Start Run**.

3. If fewer than the recommended number of capillaries pass, the spectral calibration run may be repeated automatically up to three times. Upon completion of the spectral calibration, check the quality of the spectral in the Capillary Run Data display, and choose either **Accept** or **Reject**.

Note: Refer to the *3500 Series Data Collection Software HID User Manual* for the criteria recommended when accepting or rejecting a spectral calibration.

4. Instrument Preparation and Spectral Calibration Using the Applied Biosystems® 3130 and 3130xl Genetic Analyzers with Data Collection Software Version 2.0 and Higher

Materials to Be Supplied by the User

- centrifuge compatible with 96-well plates
- aerosol-resistant pipette tips
- 3130 or 3130xl capillary array, 36cm
- performance optimized polymer 4 (POP-4® polymer) for the 3130
- 10X genetic analyzer buffer with EDTA
- MicroAmp® optical 96-well plate and septa
- Hi-Di™ formamide (Applied Biosystems Cat.# 4311320)

For additional information on performing spectral calibration, refer to the *Applied Biosystems® 3130/3130xl Genetic Analyzer User Guide*.



The quality of formamide is critical. Use Hi-Di™ formamide. Freeze formamide in aliquots at -20°C. Multiple freeze-thaw cycles or long-term storage at 4°C can cause breakdown of formamide. Poor-quality formamide can contain ions that compete with DNA during injection, which results in lower peak heights and reduced sensitivity. A longer injection time may not increase the signal.



Formamide is an irritant and a teratogen; avoid inhalation and contact with skin. Read the warning label, and take appropriate precautions when handling this substance. Always wear gloves and safety glasses when working with formamide.

4.A. Matrix Sample Preparation

1. At the first use, thaw the 5C Matrix Mix and Matrix Dilution Buffer completely. After the first use, store the reagents at +2°C to +10°C, protected from light.
2. Vortex the 5C Matrix Mix for 10–15 seconds prior to use. Add 10µl of 5C Matrix Mix to one tube of Matrix Dilution Buffer. Vortex for 10–15 seconds. Note the date of dilution on the tube.
Note: The diluted 5C Matrix Mix can be stored for up to 1 week at +2°C to +10°C.
3. Add 10µl of the diluted 5C Matrix Mix prepared in Step 2 to 500µl of Hi-Di™ formamide. Vortex for 10–15 seconds.

4.A. Matrix Sample Preparation (continued)

- For the Applied Biosystems® 3130x/ Genetic Analyzers, 16 wells are used for spectral calibration on 16 capillaries (wells A1 through H2 of a 96-well plate). Add 15µl of 5C Matrix Mix with formamide prepared in Step 3 to each of the 16 wells. After placing the septa on the plate, briefly centrifuge the plate to remove any air bubbles.



Do not heat denature.

For the Applied Biosystems® 3130 Genetic Analyzers, four wells are used for spectral calibration on four capillaries (wells A1 through D1 in a 96-well plate). Add 15µl of 5C Matrix Mix with formamide prepared in Step 3 to each of the four wells. After placing the septa on the plate, briefly centrifuge the plate to remove any air bubbles.



Do not heat denature.

- Place the plate in the 3130 series 96-well standard plate base, and cover with the plate retainer. Do not start the spectral calibration run until the oven is preheated to 60°C.

4.B. Instrument Preparation

We have found that the use of fresh polymer and a new capillary array results in an optimal spectral calibration.

Representative data are shown in Figure 3.

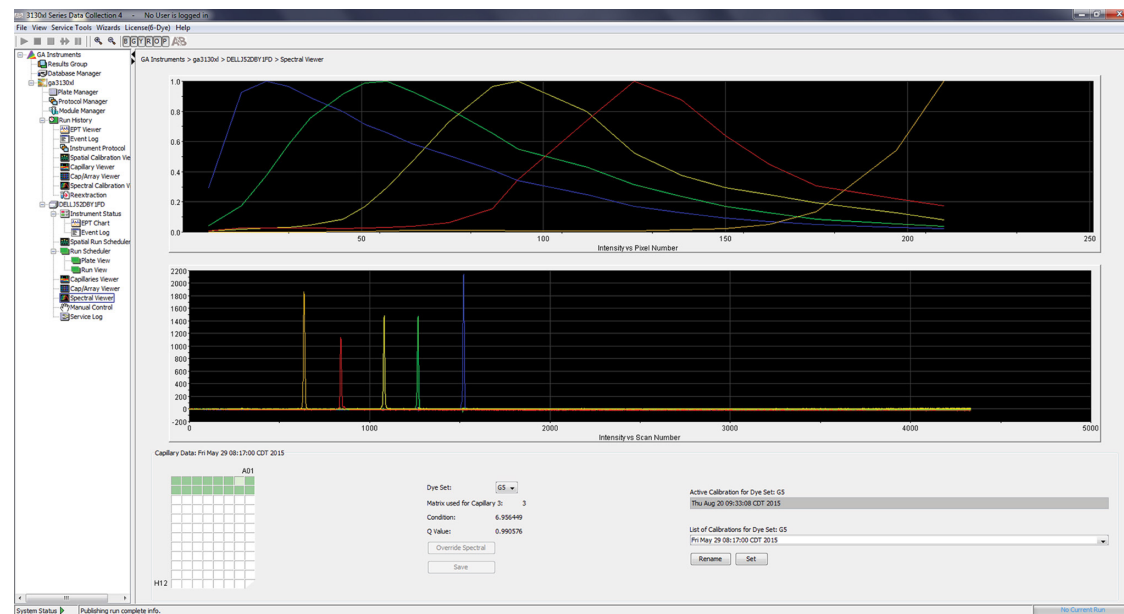
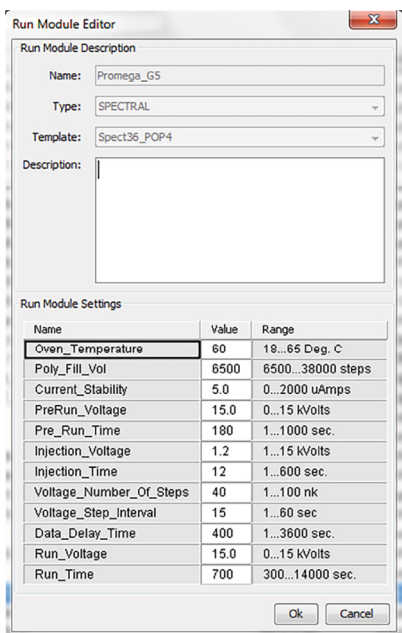


Figure 3. Representative data for the PowerPlex® 5C Matrix Standard on the Applied Biosystems® 3130x/ Genetic Analyzer using POP-4® polymer and Data Collection Software Version 4.0.

1. Set the oven temperature to 60°C, and preheat the oven for at least 15 minutes prior to the first injection.
2. To perform a spectral calibration for Promega five-dye STR amplification systems, create a new Run Module and Protocol. If a new Run Module and Protocol were created previously, proceed to Step 3.
 - a. In the Module Manager, select **New**. Select **Spectral** in the Type drop-down list, and select **Spect36_POP4** in the Template drop-down list. Change the Data Delay Time to 400 and the Run Time to 700. Change the Injection Time to 12 seconds. See Figure 4.

Note: Differences in instrument sensitivity can result in peak imbalance or reduced peak height of the matrix standards. You may need to adjust injection time or voltage to achieve a passing spectral calibration. Peak heights in the range of 1,000–4,000RFU are ideal. Peak heights above 750RFU and below the saturation point of the instrument are required.



Run Module Description		
Name:	Promega_G5	
Type:	SPECTRAL	
Template:	Spect36_POP4	
Description:		
Run Module Settings		
Name	Value	Range
Oven_Temperature	60	18...65 Deg. C
Poly_Fill_Vol	6500	6500...38000 steps
Current_Stability	5.0	0...2000 uAmps
PreRun_Voltage	15.0	0...15 kVolts
Pre_Run_Time	180	1...1000 sec.
Injection_Voltage	1.2	1...15 kVolts
Injection_Time	12	1...600 sec.
Voltage_Number_Of_Steps	40	1...100 nk
Voltage_Step_Interval	15	1...60 sec
Data_Delay_Time	400	1...3600 sec.
Run_Voltage	15.0	0...15 kVolts
Run_Time	700	300...14000 sec.

Figure 4. Run Module Editor settings.

- b. Name the Run Module (e.g., Promega G5), and select **OK**.
- c. In the Protocol Manager, under Instrument Protocols, select **New**. Type a name for your protocol (e.g., Promega G5).

4.B. Instrument Preparation (continued)

- d. Make the following selections in the Protocol Editor:
- **Spectral** in the Type drop-down list
 - **G5** in the Dye Set drop-down list
 - **POP4** for the polymer
 - **36** in the Array Length drop-down list
 - **Matrix Standard** in the Chemistry drop-down list
 - Select the spectral module you created in the previous step in the Run Module drop-down list.

Finally, select **Edit Parameters**, and make the following modifications:

- Change the lower condition bound to 4.0, and change the upper condition bound to 12.0.
- Change the Minimum Quality Score (“Q value”) to 0.95.

Select **OK** in the ‘Edit Parameters’ window, and select **OK** in the Protocol Editor.

Note: The condition number (“C value”) obtained when generating a spectral calibration will vary with the instrument. After obtaining a spectral calibration that performs acceptably, the condition bounds range in the previous step can be narrowed to more critically evaluate C values for subsequent spectral calibrations.

3. In the Plate Manager, create a new plate record as described in the instrument user’s manual. In the dialog box that appears, select **Spectral Calibration** in the Application drop-down list, and select **96-well** as the plate type. Add entries in the owner and operator windows, name the plate and select **OK**.
4. In the Spectral Calibration Plate Editor dialog box, record sample names in the appropriate cells.
5. In the Instrument Protocol column, select the protocol you created in Step 2. Ensure that this information is present for each row that contains a sample name. Select **OK**.
6. Run your plate as described in the instrument user’s manual.
7. Upon completion of the run, check the status of the spectral calibration in the Event Log window. For the Applied Biosystems® 3130x/ Genetic Analyzers, we recommend that a minimum of 12 of 16 capillaries pass calibration. For the Applied Biosystems® 3130 Genetic Analyzers, we recommend that a minimum of three of four capillaries pass calibration. If fewer than the recommended numbers of capillaries pass, repeat the spectral calibration.


Notes:


- a. Some Applied Biosystems® 3130 and 3130x/ Genetic Analyzers show imbalance in peak heights (e.g., peaks in the red and yellow dye channels are lower than those in the orange, blue and green dye channels). This imbalance should not affect kit performance.
- b. The same plate of matrix standards can be reinjected up to four times. To reinject the same matrix standards plate, add an injection by selecting **Plate Manager** and then **Edit**. Select **Edit** again in the top left corner of the window, and then select **Add sample run**.

5. Instrument Preparation and Spectral Calibration Using POP-7® Polymer, Data Collection Software Version 3.0 and Higher and the Applied Biosystems® 3130 or 3130x/ Genetic Analyzer

Materials to Be Supplied by the User

- centrifuge compatible with 96-well plates
- aerosol-resistant pipette tips
- 3130 or 3130x/ capillary array, 36cm
- performance optimized polymer 7 (POP-7®) for the 3130 or 3130x/
- 10X genetic analyzer buffer with EDTA
- MicroAmp® optical 96-well plate
- Hi-Di™ formamide (Applied Biosystems Cat.# 4311320)

 The quality of formamide is critical. Use Hi-Di™ formamide. Freeze formamide in aliquots at -20°C. Multiple freeze-thaw cycles or long-term storage at 4°C can cause breakdown of formamide. Poor-quality formamide can contain ions that compete with DNA during injection, which results in lower peak heights and reduced sensitivity. A longer injection time may not increase the signal.

 Formamide is an irritant and a teratogen; avoid inhalation and contact with skin. Read the warning label, and take appropriate precautions when handling this substance. Always wear gloves and safety glasses when working with formamide.

5.A. Matrix Sample Preparation


1. At the first use, thaw the 5C Matrix Mix and Matrix Dilution Buffer completely. After the first use, store the reagents at 2–10°C, protected from light.

2. Vortex the 5C Matrix Mix for 10–15 seconds prior to use. Add 10µl of 5C Matrix Mix to one tube of Matrix Dilution Buffer. Vortex for 10–15 seconds. Note the date of dilution on the tube.


Note: The diluted 5C Matrix Mix can be stored for up to 1 week at 2–10°C.

3. Add 10µl of the diluted 5C Matrix Mix prepared in Step 2 to 500µl of Hi-Di™ formamide. Vortex for 10–15 seconds.

4. For the Applied Biosystems® 3130x/ Genetic Analyzer, 16 wells are used for spectral calibration on 16 capillaries (wells A1 through H2 of a 96-well plate). Add 15µl of 5C Matrix Mix with formamide prepared in Step 3 to each of the 16 wells. After placing the septa on the plate, briefly centrifuge the plate to remove any air bubbles.

 Do not heat denature.

For the Applied Biosystems® 3130 Genetic Analyzer, four wells are used for spectral calibration on four capillaries (wells A1 through D1 in a 96-well plate). Add 15µl of 5C Matrix Mix with formamide prepared in Step 3 to each of the four wells. After placing the septa on the plate, briefly centrifuge the plate to remove any air bubbles.

 Do not heat denature.

5. Place the plate in the 3130 series 96-well standard plate base, and cover with the plate retainer. Do not start the spectral calibration run until the oven is preheated to 60°C.



5.B. Instrument Preparation

We have found that the use of fresh polymer and new capillary array results in an optimal spectral calibration.

Representative data are shown in Figure 5.

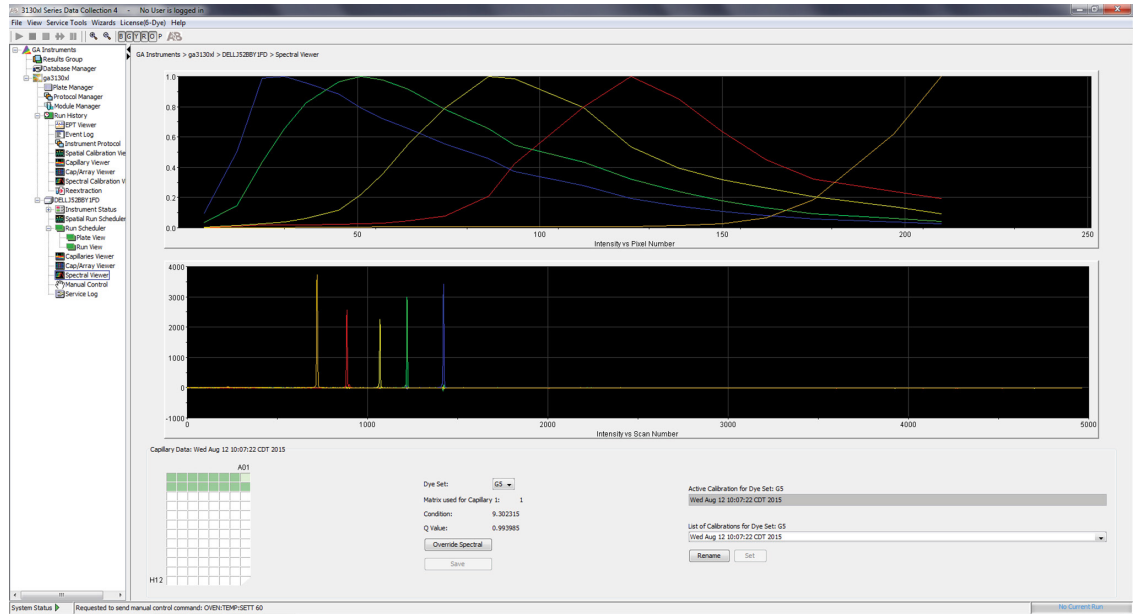


Figure 5. Representative data for the PowerPlex® 5C Matrix Standard on the Applied Biosystems® 3130xl/ Genetic Analyzer using POP-7® polymer and Data Collection Software Version 4.0.

1. Set the oven temperature to 60°C, and preheat the oven for at least 15 minutes prior to the first injection.
2. To perform a spectral calibration for Promega 5-dye STR amplification systems, create a new Run Module and Protocol. If a new Run Module and Protocol were created previously, proceed to Step 3.
 - a. In the Module Manager, select **New**. Select **Spectral** in the Type drop-down list, and select **Spect36_POP7** in the Template drop-down list. Confirm or change the following settings:
Injection Voltage: 1.2kV
Injection Time: 18 seconds
Data Delay Time: 275 seconds
Run Time: 700 seconds

Note: Differences in instrument sensitivity can result in peak imbalance or reduced peak height of the matrix standards. You may need to adjust injection time or voltage to achieve a passing spectral calibration. Peak heights in the range of 1,000–4,000RFU are ideal. Peak heights above 750RFU and below the saturation point of the instrument are required.

- b. Name the Run Module (e.g., Promega G5), and select **OK**.
- c. In the Protocol Manager, under Instrument Protocols select **New**. Type a name for your protocol (e.g., Promega G5).
- d. Make the following selections in the Protocol Editor:
 - **Spectral** in the Type drop-down list
 - **G5** in the Dye Set drop-down list
 - **POP7** for the polymer
 - **36** in the Array Length drop-down list
 - **Matrix Standard** in the Chemistry drop-down list
 - Select the spectral module you created in the previous step in the Run Module drop-down list.

Finally, select **Edit Parameters**, and make the following modifications:

- Change the lower condition bound to 4.0, and change the upper condition bound to 12.0.
- Confirm that the Minimum Quality Score is 0.95.

Select **OK** in the Edit Parameters window, and select **OK** in the Protocol Editor.

Note: The condition number (“C value”) obtained when generating a spectral calibration will vary with the instrument. After obtaining a spectral calibration that performs acceptably, the condition bounds range in the previous step can be narrowed to more critically evaluate C values for subsequent spectral calibrations.

3. In the Plate Manager, create a new plate record as described in the instrument user’s manual. In the dialog box that appears, select **Spectral Calibration** in the Application drop-down list, and select **96-well** as the plate type. Add entries in the owner and operator windows, name the plate and select **OK**.
4. In the Spectral Calibration Plate Editor dialog box, record sample names in the appropriate cells.
5. In the Instrument Protocol column, select the protocol you created in Step 2. Ensure that this information is present for each row that contains a sample name. Select **OK**.
6. Run your plate as described in the instrument user’s manual.
7. Upon completion of the run, check the status of the spectral calibration in the Event Log window. For the Applied Biosystems® 3130x/ Genetic Analyzers, we recommend that a minimum of 12 of 16 capillaries pass calibration. For the Applied Biosystems® 3130 Genetic Analyzers, we recommend that a minimum of three of four capillaries pass calibration. If fewer than the recommended numbers of capillaries pass, repeat the spectral calibration.

Notes:

- a. Some Applied Biosystems® 3130 and 3130x/ Genetic Analyzers show imbalance in peak heights (e.g., peaks in the red and yellow dye channels are lower than those in the orange, blue and green dye channels). This imbalance should not affect kit performance.
- b. The same plate of matrix standards can be reinjected up to four times. To reinject the same matrix standards plate, add an injection by selecting **Plate Manager** and then **Edit**. Select **Edit** again in the top left corner of the window, and then select **Add sample run**.



6. Troubleshooting

For questions not addressed here, please contact your local Promega Branch Office or Distributor. Contact information available at: www.promega.com. E-mail: genetic@promega.com

6.A. Applied Biosystems® 3500 and 3500xL Genetic Analyzers

Symptoms

Fewer than the recommended number of capillaries passed the spectral calibration

Causes and Comments

Matrix standard was too dilute. Matrix standard that is too dilute will result in low spectral calibration peak heights, which can result in spectral calibration failure. Increase the volume of diluted 5C Matrix Mix added to the Hi-Di™ formamide during sample preparation.

Matrix standard was too concentrated. Matrix standard that is too concentrated can result in spectral calibration failure due to saturated peaks, bleedthrough or oversubtraction in other dye colors. Decrease the volume of diluted 5C Matrix Mix added to the Hi-Di™ formamide during matrix sample preparation.

Poor-quality formamide was used. The quality of formamide is critical. Use Hi-Di™ formamide. Freeze formamide in aliquots at -20°C. Multiple freeze-thaw cycles or storage at 4°C can cause breakdown of formamide. Poor-quality formamide can contain ions that compete with DNA during injection, which results in lower peak heights and reduced sensitivity.

Reboot the CE instrument and the instrument's computer. Repeat the spectral calibration.

Ensure that the oven is preheated to 60°C prior to spectral calibration.

For best spectral calibration results, use fresh polymer, fresh buffer and water, and a capillary array with fewer than 100 injections.

6.B. Applied Biosystems® 3130 and 3130xI Genetic Analyzers

Symptoms

Fewer than the recommended number of capillaries passed spectral calibration

Causes and Comments

Peak heights for the matrix standard were too low. Matrix peak heights must be a minimum of 750RFU to pass spectral calibration. Increase the injection time or voltage. Alternatively, increase the volume of diluted 5C Matrix Mix added to the Hi-Di™ formamide during matrix sample preparation.

Peak heights for the matrix standard were too high (>6,000RFU). Decrease the injection time or voltage. Alternatively, decrease the volume of diluted 5C Matrix Mix added to the Hi-Di™ formamide during matrix sample preparation.

Peaks in multiple dye channels were detected prior to the orange peak. Increase the data delay time to exclude those peaks, and re-inject the matrix standard.

Poor-quality formamide was used. The quality of formamide is critical. Use Hi-Di™ formamide. Freeze formamide in aliquots at –20°C. Multiple freeze-thaw cycles or storage at 4°C can cause breakdown of formamide. Poor-quality formamide can contain ions that compete with DNA during injection, which results in lower peak heights and reduced sensitivity.

For best spectral calibration results, use a fresh bottle of polymer, fresh buffer and water, new septa and a capillary array with fewer than 100 injections.

Check the Event Log in the Instrument Status screen for a reason for the failure (e.g., bad dye order or insufficient number of dye spectra). Check the raw data view of the failed capillaries in the Spectral Viewer. Look for signs of low signal, high signal or baseline noise before the matrix peaks. Adjust the run conditions as described above, and reinject the matrix standard.

If the cause for failure is unclear after viewing the Event Log and Spectral Viewer, monitoring fragment migration in the Capillaries Viewer during spectral calibration run can provide information that will be useful for troubleshooting purposes. Re-inject the matrix standard, and monitor the Capillaries Viewer during the run. Note any unusual peak formations or extremely low or high peak heights. Based on the information obtained while watching the Capillaries Viewer, you may need to adjust the run conditions.



7. Related Products

Product	Size	Cat. #
PowerPlex® Fusion System	200 reactions	DC2402
	800 reactions	DC2408
PowerPlex® Y23 System	50 reactions	DC2305
	200 reactions	DC2320
PowerPlex® 21 System	200 reactions	DC8902
	4 × 200 reactions	DC8942
PowerPlex® 18D System	200 reactions	DC1802
	800 reactions	DC1808
PowerPlex® ESX 16 Fast System	100 reactions	DC1611
	400 reactions	DC1610
PowerPlex® ESX 17 Fast System	100 reactions	DC1711
	400 reactions	DC1710
PowerPlex® ESI 16 Fast System	100 reactions	DC1621
	400 reactions	DC1620
PowerPlex® ESI 17 Fast System	100 reactions	DC1721
	400 reactions	DC1720
PowerPlex® ESX 17 System	100 reactions	DC6721
	400 reactions	DC6720
PowerPlex® ESI 17 Pro System	100 reactions	DC7781
	400 reactions	DC7780

Not for Medical Diagnostic Use.

8. Summary of Changes

The following changes were made to the 10/23 revision of this document:

1. Removed any mention of ABI PRISM® Genetic Analyzers.
2. Updated Section 7.
3. Made minor text edits.
4. Updated the cover page and replaced document font.

[®]TMR-ET, CXR-ET and WEN dyes are proprietary.

© 2015, 2023 Promega Corporation. All Rights Reserved.

PowerPlex is a registered trademark of Promega Corporation.

Applied Biosystems and MicroAmp are registered trademarks of Applied Biosystems. Hi-Di is a trademark of Applera Corporation. POP-4 and POP-7 are registered trademarks of Life Technologies Corporation.

Products may be covered by pending or issued patents or may have certain limitations. Please visit our Web site for more information.

All prices and specifications are subject to change without prior notice.

Product claims are subject to change. Please contact Promega Technical Services or access the Promega online catalog for the most up-to-date information on Promega products.